

NEW PRODUCT

DECORATIVE METAL MESH

Product Description



STONE MESH

Material: Stainless Steel, Aluminum

Stone mesh combines the flexibility and lightness of traditional textiles with the strength and durability of stainless steel. This material offers a unique blend of properties, including high tensile strength, lightweight and aesthetic appeal.



Lightweight and flexible

Easy to install and shape into complex forms.



Modern Appeal

Creates beautiful effects when combined with lights.



Durable & Sustainable

Low-maintenance, and eco-friendly

Applications of Stone Mesh: Perfect for facades, interior partitions, shading systems, and modern wall cladding. It works well with lighting for enhanced designs and supports eco-friendly, low-maintenance projects.

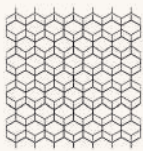
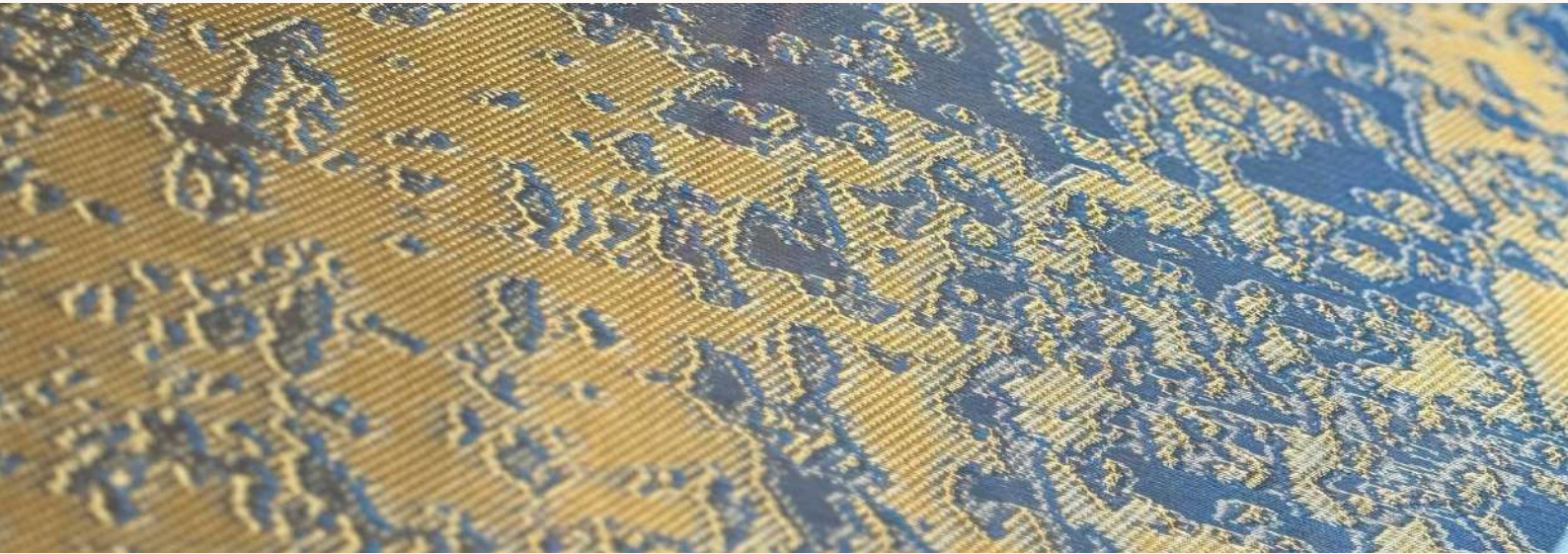
Note:

- Size Customization upon request
- For more details please contact our team

DECORATIVE MESH GLASS

Material: Stainless Steel, Aluminum

Decorative Mesh Glass is made by embedding preheated wire mesh in the middle. This process creates a stunning and distinctive visual effect while providing a shatterproof feature. The embedded metal mesh offers additional support and security against intrusions.



Wire Mesh Structure

Made by embedding preheated wire mesh within glass



Distinctive Look

Unique visual effect with shatterproof property



Tough & Secure

Difficult to break, offering robust anti-theft protection for doors and windows.

Applications of Mesh Glass : Skylights, balcony windows, roofs, partitions, wardrobe shutters, and wall paneling. A perfect blend of beauty, strength, and function for any project.



Note:

- Size Customization upon request
- For more details please contact our team

OUR COLLECTION

Material: Stainless Steel, Aluminum

HM-PREMIER

HM-CL-01

HM-TH-05

HM-CL-02

HM-TH-10

HM-CL-03

HM-TH-14

OUR COLLECTION

Material: Stainless Steel, Aluminum

HM SUBLIME

HM-TH-08

HM-TH -19

HM-TH-01

HM-TH-06

HM-TH- 15

HM-TH-02

HM-TH-03

OUR COLLECTION

Material: Stainless Steel, Aluminum

HM VIZARD

HM-TH-20

HM-TH-18

HM-TH-04

HM-TH-21

HM-TH-12

HM-TH-07

HM-TH-09